

BEFORE Acquisition

- 1) If machine is turned OFF, follow the Startup procedure:
 - With computer ON, Turn ON cytometer power (**green button**)



- 2) Make new cleaning tubes and toss old ones if not today's date
 - Fill each with 3mL **Bleach**, **Detergent**, and DI **Water**
 - DO NOT OVER FILL TUBES to avoid damaging the pump
 - *Label with cleaning solution name and date*



- 3) Check if Sheath tank is **full**
- 5) If necessary refill tank with PBS from NERL Diluent Box
 - *up to the visible line (~20 lbs on the scale).*
 - *Clean up all spills. PBS is corrosive!*



- 4) Check if Waste tank below the **WARNING LINE**
 - *If necessary empty tank down the sink*
 - *Add Bleach before placing it back.*

- 5) Start BD FACSDiva and Login with your Lab credentials.
 - *Wait for cytometer to connect to the computer*
 - *Cytometer Status on lower right side*

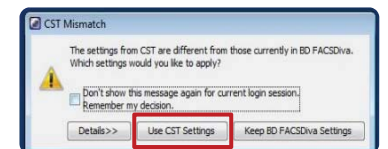


- 6) Remove tube from Sample Injection Port (SIP)
 - swing arm to the side**
 - PRIME** the instrument 3x (or 1x if instrument was already ON)
 - *Check Sheath Filter for bubbles.*
 - *If necessary slightly tap the filter while opening the yellow Bleed Valve.*



- 7) RUN PBS for 1 min on **HI** to check if machine is dirty.
 If necessary follow the Cleaning Procedure (*next page*).

- 8) Open/Create your Experiment.
 If CST Mismatch notification shows up always click:
Use CST Settings



- 9) You are ready to start acquiring your samples.

Report any issues to Flow Core staff at flowassist@ucsf.edu

AFTER every use

CLEANING PROCEDURE:

- 1) Set instrument to **RUN** and **HI**.
- 2) Place **swing arm to the side**, and run **BLEACH** for 30 secs.
 Then place swing arm **to the center** and run Bleach for **3 min**.
- 3) Replace tube and run **DETERGENT** for **3 min**.
 Place **swing arm to the side**, and run **WATER** for 30 secs.
- 4) Then place swing arm **to the center** and run Water for **3 min**.



- 5) When finished place instrument on **LO** and **STANDBY**.
 - Leave WATER tube on the SIP

- 6) REFILL Sheath tank with PBS from NERL Diluent Box
 - up to the visible line (~20 lbs on the scale).
 - Clean up all spills. PBS is corrosive!



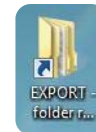
- 7) **EMPTY Waste tank if above the WARNING LINE**
 - empty tank down the sink, add Bleach before placing it back.

8) TRANSFER YOUR DATA

- EXPORT data as **Experiment** and **FCS** to directory:
 'D:\EXPORT- Folder routinely cleared' (shortcut on Desktop)

- TRANSFER your data off the computer!

*The Flow Core is not responsible for data within the computers
 Data will be deleted on a routinely basis*



- 9) Log-off FACSDiva.

- 10) Check MyCORES scheduler:

- If someone is right after you, leave instrument **ON** and **STANDBY**
- If there is a 2 hour gap or you are the **LAST USER** of the day
TURN OFF the machine (**green button**).



Cytometer Power

Report any issues to Flow Core staff at flowassist@ucsf.edu